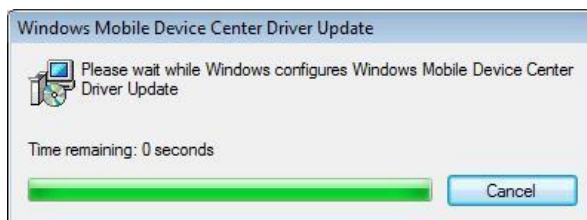


Installing and configuring Windows Mobile Device Center for Windows Vista

Plug device in to your Windows Vista PC and double click on the installation file. The drivers for your Windows Mobile device will now install automatically.



Read and **Accept** the Windows Mobile Device Center EULA.

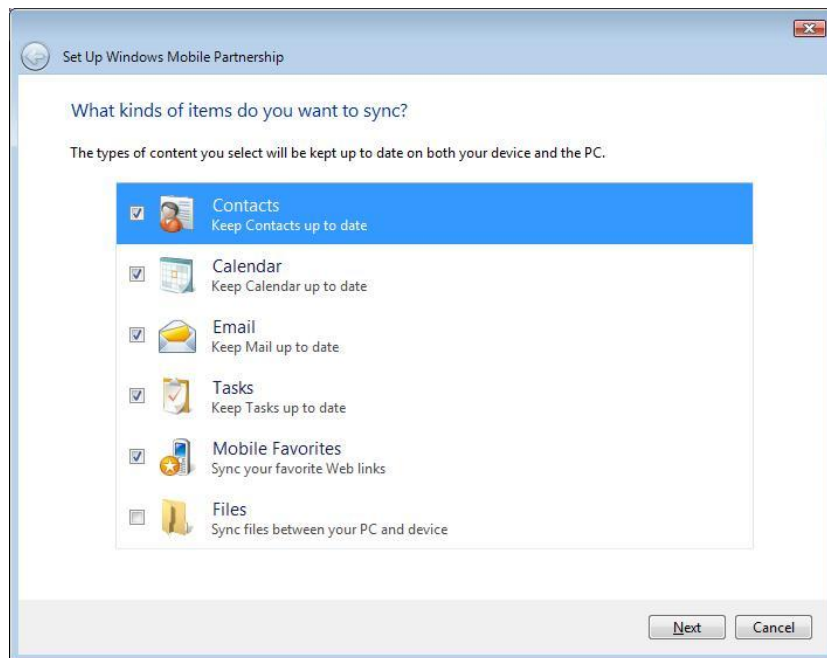


Once the installer has completed you will have the option to register online. Make your selection.

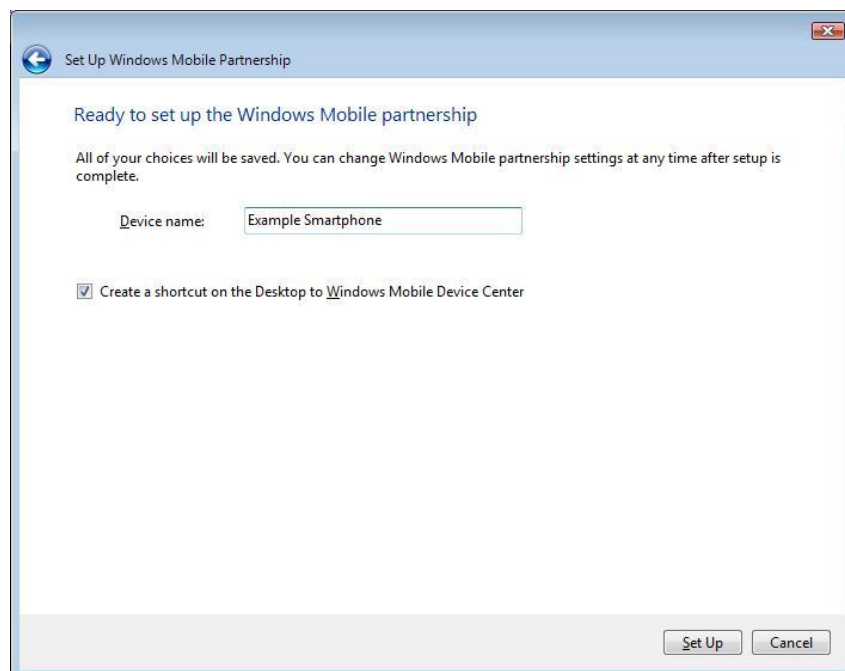
The Windows Mobile Device Center (WMDC) will now open, ready for configuration. The WMDC will show your Windows Mobile device as connected in the bottom left hand corner of the screen. In this first screen you have the option to set up your device to synchronise with Microsoft Outlook – this section is known as a Windows Mobile Partnership.



Note - Choose 'Connect without setting up your device' if you only want to transfer media files, check for updates, and explore your phone but not sync Outlook information. Your first option is to configure your PC items including Outlook data (Contacts, Calendar, Tasks and Email), Internet Explorer bookmarks and files within folders on your PC. Once you have made your selections click **Next**.



Select a name for the Windows Mobile device you are configuring your settings for, and click **Set Up**.



WMDC will now set up the device partnership as per the synchronisation settings you selected.

Once this has completed you will be taken to the main WMDC screen. From here you can see what changes, if any, have propagated to the device from your PC. In the example below you can see that 8 new pictures are available for import.



From here you can also browse the contents of the Windows Mobile device and alter the previously configured synchronisation settings.

The bottom left of the screen will show the last synchronisation time, although a synchronisation will occur automatically every time the device is connected.

